



# Tri-Flora Plus™

Three Probiotic Strains - Two Lines of Intestinal Defense

THREE PROBIOTIC STRAINS IN ONE VEGETABLE CAPSULE



5 BILLION LIVE ORGANISMS (CFU) PER CAPSULE

## Two Lines of Intestinal Defense

### 1st line of defense

#### *Saccharomyces boulardii*

ADHERES TO PATHOGENS



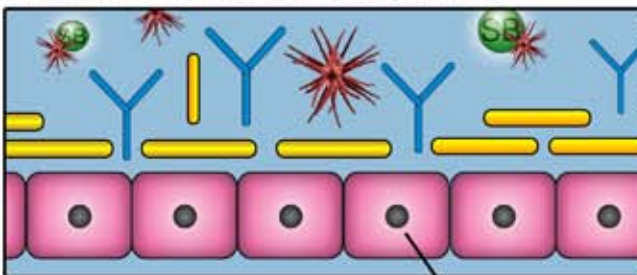
Pathogens

- Protection from pathogens and able to bind to *E.coli*
- Non-colonizing and cannot adhere to epithelial cells

### 2nd line of defense

#### Lactobacillus & Bifidobacteria

REINFORCE THE INTESTINAL BARRIER



Epithelial cells

Intestinal Barrier

- Able to adhere to intestinal epithelial cells
- Acts to reinforce the intestinal barrier and reduce bacterial adhesion
- Naturally present in human intestinal tract



**NuMEDICA®**  
ACHIEVING PHYSIOLOGICAL BALANCE  
9503 E. 55th Place, Tulsa OK 74145  
Toll Free 1-866-787-5175  
www.numedica.com